



# Merge Eye Station™

An image capture software and digital interface for existing fundus cameras

**Merge Eye Care** Passed  
Connectathon  
Testing for  
Merge Eye  
Station v11.3  
and v11.2



Before you can consider ophthalmic image management systems and an EMR, you need to digitize your images. You need to digitize your patient images and use a digital imaging system that will work with your existing cameras.

Now you can.

### How We Help You

Merge Eye Station instantly converts your existing fundus camera to a fully-digital system that produces journal quality images. With high resolution solutions, you can now improve your image quality without replacing your camera.

# Merge Eye Station

converts your existing fundus camera to a fully-digital system.

With Merge Eye Station you can...



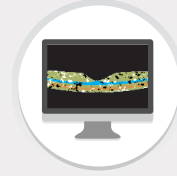
Select a system meeting your resolution requirements



Grow your imaging capabilities without costly fundus camera replacement



Have the same user interface across multiple fundus camera models and brands



Automatically integrate to Merge Eye Care PACS including a unified database



Interface to multiple different fundus cameras

## Merge Eye Care Solution Suite

### Merge Eye Station™

Utilize your existing fundus camera to a fully digital system

### Merge Eye Care PACS™

Automatically import images and diagnostic reports from diagnostic devices into a single web-based viewer

## Merge Eye Care Solutions

Merge Eye Care Solutions provide a suite of products specifically for ophthalmic imaging and interoperability, including a digital imaging PACS and a modular imaging device that can capture images of both anterior and posterior segments.

Merge Eye Care Solutions provide an opportunity for practices to meet the growing need for increased patient visits, early detection and accurate tracking of disease progression.

*Merge Eye Care PACS is not FDA-cleared for diagnostic use on mobile devices.*

WSTN-11171 Rev 4.0

**MERGE**  
An IBM Company

877.446.3743 x3 • [merge.com](http://merge.com)

 @MergeHealthcare

 [linkedin.com/company/merge-healthcare](https://www.linkedin.com/company/merge-healthcare)

 [facebook.com/MergeHealthcare](https://www.facebook.com/MergeHealthcare)