



CuattroDR™ Digital Radiography

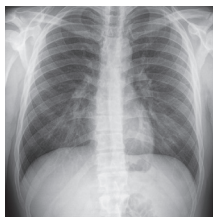
u-Arm

CuattroDR™ U-Arm system, also referred to as Digital Universal Radiographic System (URS), provides unique space-saving and workflow benefits for small radiology and orthopedic clinics without requiring ceiling-support structures for X-ray tube suspensions. The URS is automatic and motorized, maintaining constant alignment between the X-ray and imaging receptor. It also provides limitless flexibility to position patients for standing, sitting, horizontal, weight-bearing, and off-axis projections – which is ideal for radiographic procedures. With CuattroDR U-arm, you can increase imaging volume with real-time image acquisition, avoid the significant expense of additional X-ray suites, and improve workflow. CuattroDR excels in all environments, from large volume sites to space-limited private practices.



U-Arm Features and Specifications

- High Frequency: 100kHz
- Microprocessor Control: Yes (standard)
- Auto Diagnostic System: Yes (standard)
- Automatic Programming: Yes (standard)
- Power Output: 32kW through 80 kW (choice)
 - Single Phase available from 32kW to 50kW
 - Three Phase available from 32kW to 80kW
- kVp Range 40-125, 150 kVp Standard on 50kW - 80kW
- mA Range 10-800, Generator Specific
- Time Range: 1 ms - 10 Seconds
- Rotor Control Low Speed or High Speed
- Automatic Exposure Control: Yes
- Collimator with Centering Bucky Light/Laser, and Timer
- Standard kVp rating : 150 kVp / Heat 300 kHu
- Toshiba 12° / Dual Focal 0.6 and 1.2 mm
- LS 14/42 Kw (50Hz) 16/45 Kw (60Hz) or HS 25/69 Kw (150Hz) 27/75Kw (180Hz)
- Fixed Bucky (standard): S1717/S1417P
- Motorized Movements: SID, Rotation, Elevation (standard)
- Motorized Bucky Rotation (optional)
- Arm Rotation: + 120° / - 30°
- Movement Speed: + / - 45°
- Maximum Distance (from Bucky) Low Speed and High Speed Movement
- Source to Image Distance: 40"-72"
- Intermediate SID Yes, Capable From Any Angle
- Tube Rotation 360° with 45° Degree Detents
- Safety Devices Intelligent Anti-Collision Systems
- Stand Line Voltage: 208; 230; 240 VAC Single Phase
- X-Ray Tube 300, 400, or 600 kHu
- Collimator Manual Collimator
- Concentrated Laser Light Line
- Dimensions (H x W x D) 104.3" x 83" x 66"
- Weight: 714.3 lbs
- Standard Mobile Table (4-wheel) 78.7" x 25.6" x 27.5" 101.1 lbs (440 lbs rated)
- Digital Detector(s): Carbon Fiber



SM-126 Rev 1.0

Distributed by
MERGE
 An IBM Company

877.446.3743 x3 · merge.com

 @MergeHealthcare

 [linkedin.com/company/merge-healthcare](https://www.linkedin.com/company/merge-healthcare)

 [facebook.com/MergeHealthcare](https://www.facebook.com/MergeHealthcare)