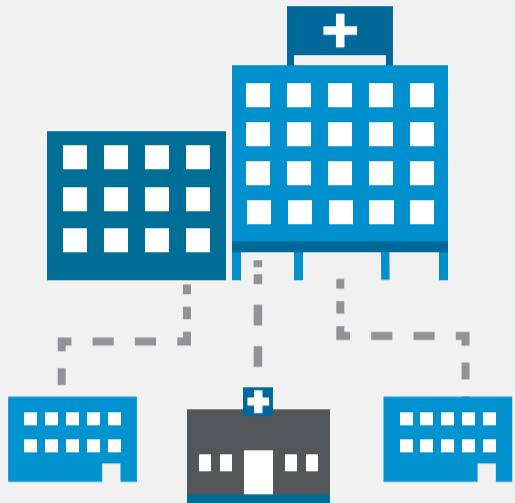


TOP 6 REASONS TO SWITCH TO MERGE HEMO

1 MULTIPLE FACILITY SUPPORT



Secure easy access to all patient data through a single server that supports individual departments, multiple facilities, and the enterprise as a whole.

2 SAVE TIME



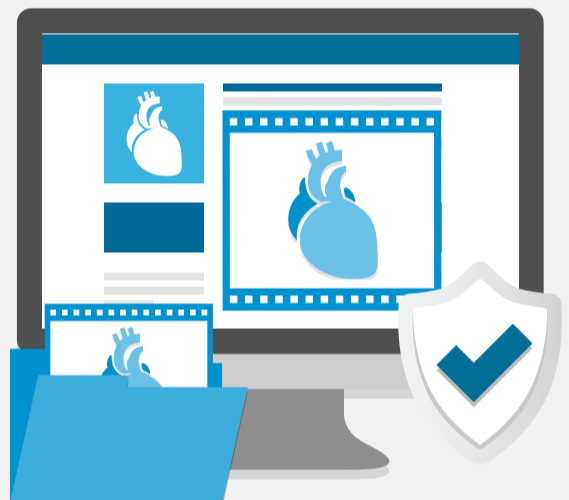
Pre-populate physician clinical reports with relevant procedural and hemodynamic data captured at point-of-care rather than reconstructing them post-procedure.

3 EASE OF USE



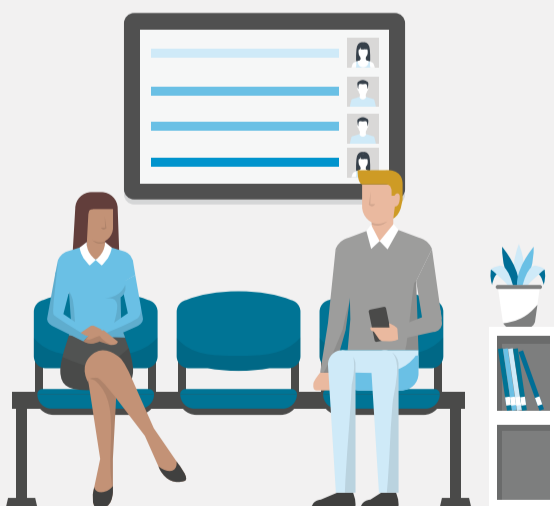
Merge Hemo's easy-to-use touch screen interface means less time on the keyboard and faster access to your workflow.

4 INTEROPERABILITY



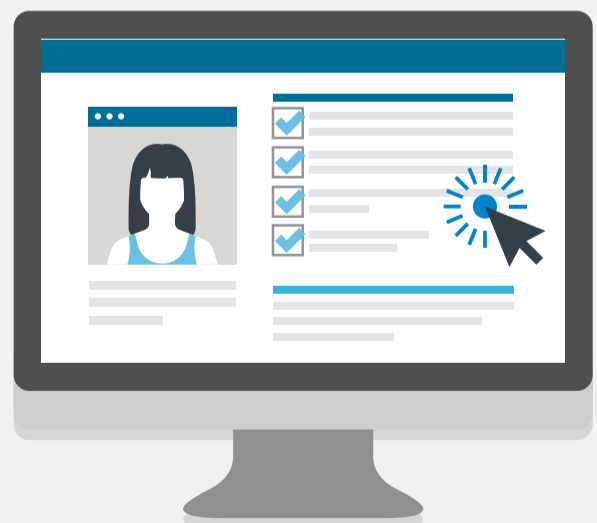
Merge Hemo supports strong integration with industry leading EMR vendors, protecting your existing IT investment and your hemodynamic data.

5 PATIENT MANAGEMENT, SIMPLIFIED



Easy-to-use department overview displays patient status for the family wait area and dry erase boards for staff.

6 ANALYTICS-ENABLED DATA



Readily-obtained data expedites the production of customized, user-defined reports.

HEMO-9377 Rev 1.0

MERGE
An IBM® Company